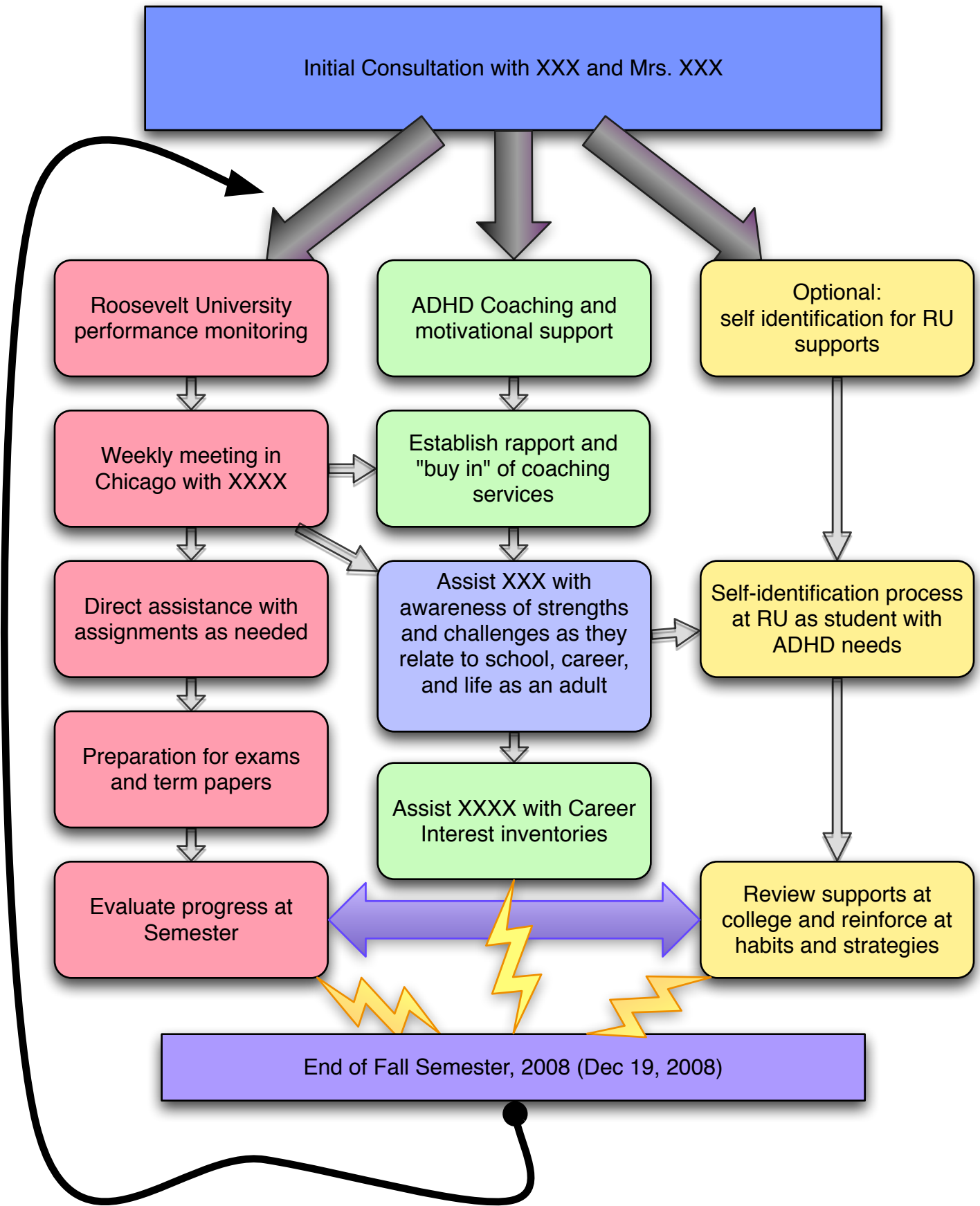


Service Flowchart: Post High School



XXXX XXXX: Post High School
Educational Consultation Plan
8/20/08

Goals associated with educational consultative service for XXXX XXXX include (but are not limited to);

1. Matt will consult with XXXX on a weekly basis to monitor his performance at Roosevelt University, Fall 2008.
 - a. Matt will establish and maintain rapport with XXXX to ensure an open line of communication regarding academic performance, Fall 2008.
 - b. Matt will assist XXXX in developing a schema for organization and work outside of class as it relates to his Fall 2008 schedule.
 - c. Matt will assist XXXX in monitoring his progress in his Fall 2008 classes
 - d. Assist XXXX with assignments and school responsibilities (eg, proofreading papers, exam preparation)
2. As requested by XXXX, Matt will assist in XXXX's application for accommodations at Roosevelt University
3. Matt will work on instructing XXXX in long term planning strategies as they relates to XXXX's difficulties in maintaining motivation, discipline with studies, attendance to class, etc.
4. Matt will work with XXXX on career interest inventories to explore careers which are well-matched (and perhaps identifying those which are not well-matched) to his many marketable strengths
 - a. Matt will work with XXXX on the development of a resume supporting a career goal
 - b. Matt will advise on classes which support a career goal

Questions:

- 1.) What career options –within the context of XXXX's learning profile-- offers and supports to meet his needs?
- 2.) What supports are needed to provide a foundation for XXXX's success at RU?
- 3.) Do these supports require self-identification and service associated with RU's Student Disability Services?
- 4.) What resources can XXXX access regularly (and naturally) to support his success at RU?
- 5.) What barriers contribute to XXXX's academic difficulty? What choices are required to compensate for or navigate these barriers?